



## DP&L's Right Tree, Right Place Program

With the spring planting season in full swing, planning is important. People often plant trees without thinking about how large they will grow once they mature. It's difficult to imagine that the six- or eight-foot tree you plant today could grow as tall as 80 or 100 feet over time.

DP&L's Right Tree, Right Place program can help you select a tree that is appropriate for the area you're considering. Keep in mind three tips on how to plant the right tree in the right place to prevent the tree from growing into overhead powerlines.

For more information about the Right Tree, Right Place program, visit our website at [dpandl.com/righttree](http://dpandl.com/righttree).

1

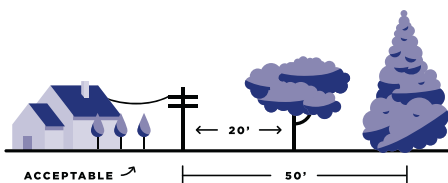
### FIND THE RIGHT TREE



Trees come in all shapes and sizes and often change dramatically over their lifetimes. Before selecting your tree, make sure you know how tall and wide the tree or shrub will be at maturity.

2

### CHOOSE THE RIGHT SPOT



Where you plant is just as important as what type of tree you plant. You can increase energy efficiency by selecting a tree that shades your home in the summer. Be sure you plant the tree so it will continue to be a safe distance from existing utility lines as it grows to maturity. Taking the time now to consider location can prevent avoidable power disturbances for years to come.

3

### PUT SAFETY FIRST CALL BEFORE YOU DIG

At DP&L, we always put safety first. It's important to avoid injury and damage to underground electrical, gas and other utility lines. Call the Ohio Utility Protection Service (OUPS) at 800-362-2764 at least 2-10 business days before you start any kind of digging or construction on your property. A representative will identify underground lines on your property so you can avoid any problems.



**Know what's below.  
Call before you dig.**

## Tree City USA Community Environmental Grant Winners

As part of DP&L's Right Tree, Right Place program, three \$25,000 community environmental grants were awarded to three Tree City USA communities. The funds will be used to plant utility-friendly trees and enhance the landscape for their residents to enjoy now and by future generations.

Winners of these grants were announced on the first day of Spring, March 20, 2018. Congratulations to the communities of **Coldwater, Marysville** and **Miamisburg!**

DP&L is committed to community involvement. We will assist the grant winners by actively recruiting volunteers, including DP&L employees, to help implement their projects. Since the program began three years ago, DP&L has provided more than 1,100 trees to neighborhoods and residents supporting utility-friendly tree plantings through the Right Tree Right Place program.